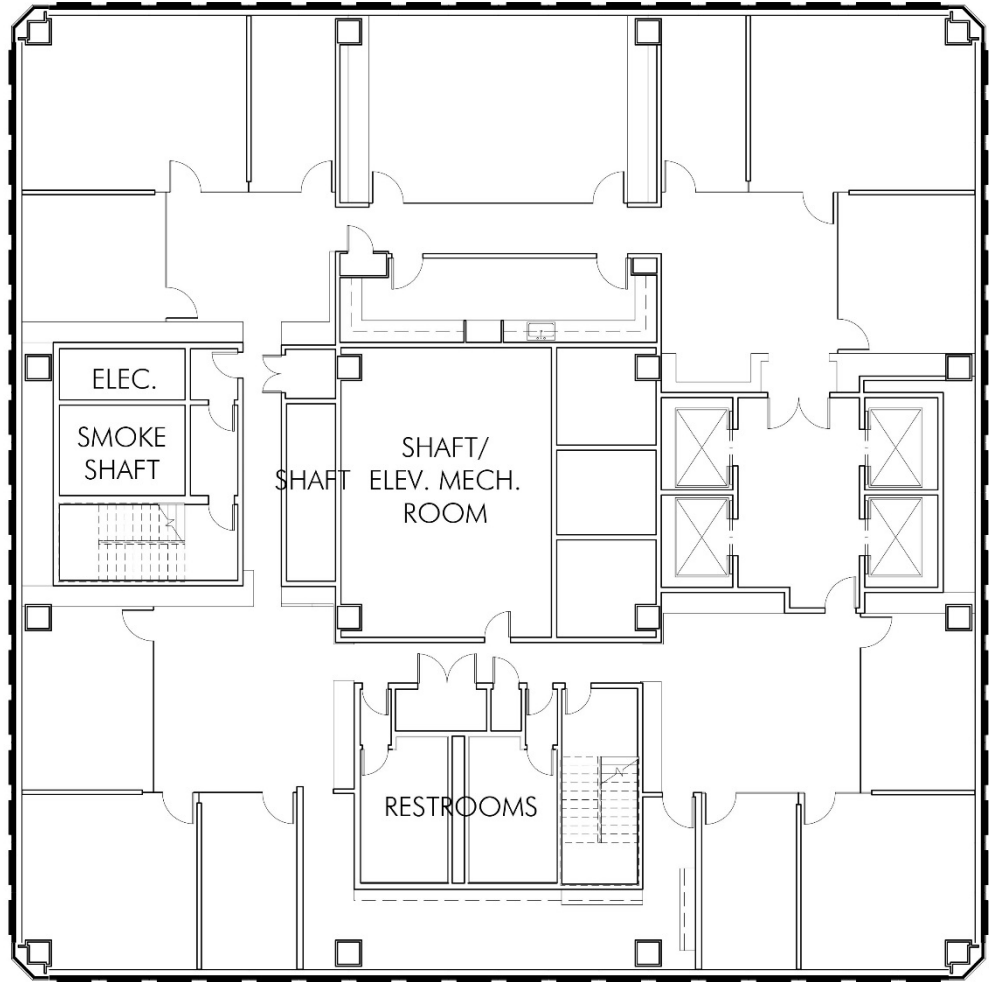


600 Montgomery Street
San Francisco, CA



28th Full Floor Plan
Suite 2800: 7,758 RSF

11 Private Offices, 2 Conference Rooms,
Kitchen, and Production Area.

Ross A. Robinson
Managing Director
Lic. #01414104
ross.robinson@cushwake.com
415-773-3576

Danny Pickard
Director
Lic. #01975977
danny.pickard@cushwake.com
415-773-3572

