

505 Sansome Street

San Francisco, CA



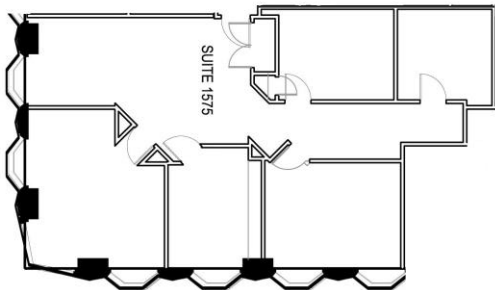
Part of the Transamerica Pyramid Center 505 Sansome, is unique to San Francisco, full HVAC and operable windows, quality amenities, and world class service.



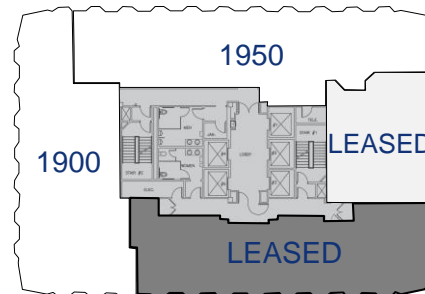
- Parking in the Pyramid Garage for all Pyramid Center tenants and their invited guests. Both daily and monthly rates available.
- Bicycle parking, showers, and lockers; Building conference room; Dish cable TV; The Redwood Park; and Concierge service.
- LEED Platinum and Energy Star Ratings; BOMA Earth Award Winner. Built in 1982, with operable windows.

AVAILABLE SPACE:

Partial 1 st Floor Northeast (Suite 101)	1,352 RSF	NEW! Former Starbuck's Store. High Ceilings, Outdoor Seating and a Restroom. Available Now!
Full 2nd Floor Suite 200 (see plan)	7,921 RSF	NEW! High ceilings! Overlooks Redwood Park. 12-15 PO's, 1 Large Conference Room, IT, Kitchen and File Storage. Available February 2015.
Partial 3 rd Floor Southeast (Suite 375)	1,988 RSF	4 PO's, 1 Conference Room and Open Space. Sansome Views. Available Now!
Partial 15 th Floor Northeast (Suite 1575)	1,865 RSF	NEW! 2 PO's, 1 Conference Room, Kitchen/Workroom, Private Restroom, and Open Space. Available September 2015.
Partial 19 th Floor South (Suite 1900)	2,904 RSF	Mostly open space with 1 View Office, 1 Conference Room, Pantry, and Large IT/Storage Room. Good Views. Available June 2015.
Partial 19 th Floor West (Suite 1950)	3,033 RSF	Northwest corner of the building. Great City views! 5 PO's, 1 Conference Room, Pantry and Reception Area for 2 Stations. Available June 2015. Elegant Finishes.



15th Floor



19th Floor

For further information, or a tour please contact:

Margaret R. Duskin
Executive Director
Lic. #00471868
mduskin@cushwake.com
415-773-3538

Ross A. Robinson
Senior Director
Lic. #01414104
ross.robinson@cushwake.com
415-773-3576



TRANSAMERICA PYRAMID CENTER